

2022

IMPACT REPORT



Health Impact Ohio

Equity. Access. Quality.

HIO is a proud affiliate of



Columbus Medical
Association

Table of Contents

1

Message from the CEO

2

Project Work: Central Ohio Pathways HUB

3

**Project Work: Community Health Worker
Certification Training Program**

4

**Project Work: Community Health Workers for
COVID Response & Resilient Communities**

5

**Project Work: Quality Improvement &
Fiscal Sponsorship**

6

Perspectives from the Community

7

2022 Staff & Board of Directors



Health Impact Ohio
Equity. Access. Quality.

Colleagues & Friends,

2022 was a year of immense growth, learning and collaboration for Health Impact Ohio. Still deeply rooted in our identity as a regional health improvement collaborative, HIO has expanded our vision and mission to encompass all individuals in every community across Ohio. We've found how deeply our work is impacted by the work of so many others with similar missions and visions in our state, and how positively we can collaborate when we broaden our focus, share resources, and expand our reach.

This year has been marked by several highlights for our organization. In June, we had the honor of collaborating with our fellow Ohio regional health improvement collaboratives to host a statewide learning collaborative that brought stakeholders in health improvement both in person and virtually. With our first ever funding through the Centers for Disease Control and Prevention, we were able to train over 500 Community Health Workers from across the state in bi-monthly, virtual trainings on the latest issues in the COVID-19 pandemic. Our CHW Certification Training Program graduated its fourth cohort, this year welcoming students from outside of Central Ohio for the first time. CHWs in our Central Ohio Pathways HUB continues reaching our most vulnerable community members, this year serving our 4,000th (and counting) client. Quality improvement (QI) continues to be a pillar of priority for HIO as we expanded coaching to primary care practices across the state to address disparities in blood pressure control and smoking cessation. We also welcomed the Ohio School-Based Health Alliance to be housed within our organization as we serve as their fiscal sponsor.

It is all of this work and the awareness that there is still much more to address that propels us into the new year. We invite you to take a look at our 2022 Impact Report, which details our project work that promotes equity, expands access, and improves quality of health and health care for all Ohioans, and should serve as a roadmap to where we plan to continue address health disparities for our most vulnerable neighbors.


We couldn't do this work without the unwavering support of our board of directors, dedication of our staff, and collaboration from our community partners. We thank you all and look forward to continuing to impact health in Ohio in 2023!



Carrie Baker
President & CEO

Health Impact Ohio has proudly managed the Central Ohio Pathways HUB since 2019. This Community Health Worker (CHW) led care coordination program has been a lifeline to some of our region's most at-risk populations in recent years.

35,257



Pathways Initiated

26,337



Pathways Completed

74%



Pathway Completion Rate

4,479



Clients Served

2,198



COVID Educations

166



Employment Pathways Completed

156



Housing Pathways Completed

122 Healthy Birthweight Babies



96%

of babies born to parents receiving service from Ohio Commission on Minority Health funded CHW's were born at a health birthweight.

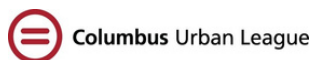
HUB Technology Platform Migration to Unite Us



In an effort to achieve interoperability in care coordination efforts, HIO will migrate to Unite Us for our HUB technology platform in 2023.

"The team at Health Impact Ohio through the Central Ohio Pathways HUB are very much looking forward to the continued work with Unite Us. Through the Pathways Community HUB Institutes IT Vendor Accreditation process, Unite Us and the Central Ohio Pathways HUB have been able to work together to create a new IT option for HUBs across the country. This platform will offer user friendly data inputs, data dashboards, and interoperability functionality that is the next horizon for HUBs to function in a more collaborative effort with any other supports clients may be working with. We look forward to going live in this new platform in the first quarter of 2023. – Jenelle Hoseus, Central Ohio Pathways HUB CEO

The HUB continues to provide vital connections to care and services through their Care Coordination Agencies, who collectively employ 45 Community Health Workers





HUB Special Project Highlights

The Central Ohio Pathways HUB is proud to work with community partners to engage in special projects that aim to improve health outcomes.

Diabetes Self Management Education

"Wellness First is pleased to engage with clients that need that extra support while challenged with type II diabetes.



With 28.5 million adults diagnosed with Type II diabetes, we encourage each client to participate in DSME programming to arrive at better outcomes." - Kimberly S. Wilson-Lawson, DCS, CHW, MHF Executive Director, Wellness First.

The Ohio Medicaid Manage Plans partnered with the Central Ohio Pathways HUB and Dayton Regional HUB to focus efforts on care management for individuals with chronic conditions. In this initial, two month pilot, the plans provide referrals to the HUBs for members who have A1c that is higher than 7 for potential support from a Community Health Worker (CHW) within the HUB. The CHW will assist the individual with all of their needs, but will spend time specifically educating them on the Diabetes Self Management Education programs available for long term management of their disease.

Targeted Engagement & Meaningful Engagement Study

"If we only assess health inequities through an ahistorical lens, we will never understand and address the root causes."



- Deena Chisolm, Nationwide Foundation Endowed Chair in Health Equity Research; Director, Center for Health Equity and Outcomes Research; Vice-President, Health Services Research, The Abigail Wexner Research Institute at Nationwide Children's Hospital.

Researchers at the Center for Child Health Equity and Outcomes Research at Nationwide Children's Hospital (NCH) were awarded \$3.1 million from the NIH for the Targeted Investment and Meaningful Engagement (TIME) Study. Led by Deena Chisolm, PhD, the TIME study focuses on understanding the impact of structural racism and discrimination on maternal and child health in the Linden community and using that understanding to inform community investment strategies. Health Impact Ohio is partnering with the team of researchers to assess the social needs and neighborhood perceptions of Linden residents using data from Pathways HUB clients. This 5-year project is a collaboration with researchers from the College of Public Health, Knowlton School of Architecture, and the Kirwan Institute for the Study of Race and Ethnicity at The Ohio State University.



Central Ohio Pathways HUB CHW Certification Program

Health Impact Ohio is proud to be an Ohio Board of Nursing (OBN) approved provider of Community Health Worker (CHW) Certification Training. 2022 has been a successful second year providing this program to a diverse, passionate group of individuals around the state.

Since Program Inception in March 2021:

04

Cohorts Offered

95

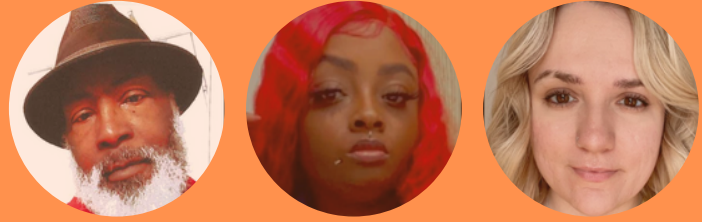
Participants Graduated

46

Currently in Process for OBN Certification

42

Participants Certified by OBN



Program Highlights

Shadow Cohort

We are proud to share that our Central Ohio Pathways HUB CHW Certification Program has expanded. This fall we were able to offer students from Akron, Cleveland, Dayton, and Stark County the opportunity to participate in our first self-paced CHW Certification Program offering. Through this Shadow Cohort, our students were given the flexibility of completing the course at their own pace by completing online modules, tests, and recorded classes. 17 students graduated from our self-paced offering this November.

Ohio Department of Education Highschool Preceptor Pilot Program

The Central Ohio Pathways HUB CHW Certification Program is participating in a pilot program to train high school students for careers as Community Health Workers. We are proud to announce that we graduated 7 high school students in our fall cohort that ended this November.



**Community Health Workers
for COVID Response and
Resilient Communities**

Providing evidence-based COVID education to Ohio's Trusted Messengers

Health Impact Ohio proudly serves as the lead on the Community Health Workers for COVID Response and Resilient Communities (CCR) grant, funded by the Centers for Disease Control and Prevention (CDC). Through this work, HIO provides training, resources, and networking opportunities to Community Health Workers across the state of Ohio on the latest COVID-19 information and other COVID-19 related topics.

- 12** Participating Pathways HUBs Statewide
- 20** Statewide CHW Trainings
- 504** CHWs Trained in 2022
- 77** Ohio Counties Served by Participating CHWs

Currently Participating HUBs:

- Healthcare Access Now, Cincinnati
- Better Health Partnership, Cleveland
- Community Action Pathways, Stark County
- Mahoning Valley Pathways HUB, Mahoning County
- Bridges to Wellness, Tuscarawas County
- Northwest Ohio Pathways HUB, Northwest Ohio
- Central Ohio Pathways HUB, Central Ohio
- Community Health Access Project, Mansfield
- Dayton Regional Pathways HUB, Dayton
- Pathways HUB Community Action, Akron
- Lorain County Community Action Agency, Lorain County
- Corporation for Appalachian Development, Southeast Ohio

Currently Participating Grant Partners:

- Nationwide Children's Hospital
- Ohio State University College of Public Health
- Partners In Health
- Strategic Resource Group

Examples of training topics:

- Basic COVID information regarding variants, vaccines, boosters, and therapeutics.
- Education on vaccines in pregnant and breastfeeding people and vaccines in children
- Evidence-based tactics rooted in behavioral economics on approaching and connecting with clients regarding COVID-19 education and vaccination
- The housing crisis and the impact of COVID
- Addressing vulnerable populations including elderly, individuals with intellectual & developmental disabilities, racially & culturally marginalized populations.
- Utilizing data in decision making to inform CHW deployment via an Equity Mapping Tool funded through CCR

Click to see a feature of participating Ohio CHW's explain how CCR tools, trainings and resources have impacted their work.



HIO Led Quality Improvement Coaching



Ohio is in the top quartile of states for high cardiovascular disease (CVD) event rates, combined stroke and heart attacks, highlighting the need for the Heart Healthy Ohio Initiative (HHOI) Quality Improvement Project (QIP). HHIO QIP is funded by the Agency for Healthcare Research and Quality and led by several of the medical schools and the three Regional Health Collaboratives across the state. This QI initiative is partnering with

the Ohio Cardiovascular and Diabetes Health Collaborative (Cardi-OH) and the Ohio Academy of Family Physicians and is focused on adapting and testing a Heart Healthy Quality Improvement (QI) process designed to improve cardiovascular health and reduce disparities in CVD.

Health Impact Ohio has partnered with the HHOI to provide:



Assessment & coaching of 32 Statewide Primary Care Practices



Communications creation & dissemination planning



Continuous quality improvement tailored to each practice

HIO Fiscal Sponsorship: The Ohio School-Based Health Alliance



OHIO
SCHOOL-BASED HEALTH ALLIANCE
Healthy Kids Learn Better


The Ohio School-Based Health Alliance (“Ohio Alliance”) is the only nonpartisan, statewide organization created to advance and support the sustainability and expansion of school-based health care to

reduce disparities and improve health and education outcomes for Ohio’s students, their families, and communities. Since 2010, the Ohio Alliance has been designated as the state affiliate of the national School-Based Health Alliance. The Ohio Alliance was relaunched in 2021 after a decade of inactivity, and is now as a fiscally sponsored initiative HIO. Two HIO staff members, Carrie Baker & Heidi Christman, both with previous school-based health experience also serve as Treasurer of the Ohio Alliance Board of Directors. We are proud to be able to support the mission of the Ohio Alliance through this initiative.

The Ohio Alliance gathered in in fall 2022 in partnership with the Ohio Department of Health. Representatives of the Ohio Alliance Board and the National Alliance are pictured here.




Perspectives from the Community



“Over the past year, HIO played a huge role in helping to educate Medicaid Managed Care members about the benefits of the COVID vaccinations. This was directly aligned with the Ohio Department of Medicaid’s (ODM) strategy of the Next Generation of Managed Care—challenging the status quo of how managed care in Ohio was previously administered to a population health approach that is collaborative and aligned with state agencies, managed care, health systems and providers, and more importantly community agencies. HIO continues to be a leading partner at the table to continue efforts to collaborate across sectors and agencies to improve the health of the population in innovative ways while also making strides to increase SDoH data sharing. HIO is helping to address Health Equity and improve health outcomes in all Ohioans!!”

-Erin Brigham, Senior Director, Quality Improvement & Population Health- Ohio Market, CareSource & HIO Board Member



“Health Impact Ohio’s work is far-reaching across the community. I always leave Board meetings feeling excited by the conversations that are happening, because they’re conversations that aren’t happening in other places. It’s unique to bring providers, payers, nonprofits, and policy wonks, among others, together at one table. The organization is forward-thinking and understands the intersection between policy and how it impacts what’s really happening on the ground.” Director of Public Policy and Advocacy, The Center for Community Solutions & HIO Board Member



Perspectives from the Community

“Through the Centers for Disease Control and Prevention’s (CDC) Community Health Workers (CHWs) for COVID Response and Resilient Communities grant, Franklin County Public Health was thrilled to be able to fund the Fall 2022 CHW Certification Cohort. The grant activities were focused on training new CHWs, integrating and deploying them into their local communities, and promoting engagement among clients to medical and social service agencies. As the recipient of the grant, FCPH is proud to be able to assist Health Impact Ohio in funding the continued training of CHWs within Franklin County and Central Ohio.” – Joe Mazolla, Health Commissioner, Franklin County Public Health



“Health Impact Ohio has long been a connector and collaborator in Central Ohio healthcare – whether through quality improvement, data reporting, or community outreach. In what may be the most impactful connections yet, Health Impact Ohio is assisting our most vulnerable populations to get access to critical health and social services through the Central Ohio Pathways Hub. With over 4,000 clients served, and 25,000 pathways completed, Health Impact Ohio is an integral part of our population’s health and well-being.” - Principle Research Scientist, Battelle & HIO Board Member



“Our partnership with Health Impact Ohio has been invaluable in the last year, as we navigated workforce transitions. We relied on HIO’s expertise in preparing for re-accreditation and building our new outcomes framework and systems for our behavioral healthcare agency, which allowed us to move from a compliance focus to continuous quality improvement. Our team considers the HIO team as trusted partners and collaborators that align with our commitment to deliver quality pediatric behavioral healthcare and improving client health outcomes.” -Susan Lewis Kaylor, President & CEO, St. Vincent's Family Center





2022 Staff

Carrie Baker, President & Chief Executive Officer

Eliana Lagos, Finance & Administration Director

Jenelle Hoseus, Chief of Policy & Partnerships, HIO CEO, Central Ohio Pathways HUB

Tanikka Price, Education Director, Central Ohio Pathways HUB

Mary Mutegi, Project Manager, Central Ohio Pathways HUB

Grant Botley, Data Systems Manager, Central Ohio Pathways HUB

Heather McKinley, Performance Manager, Central Ohio Pathways HUB

Kyle Boyle, Finance Manager, Central Ohio Pathways HUB

Heidi Christman, Chief Operating Officer

Brittany Daniels, Director of Operations & Communications

Caroline Carter, Chief Transformation Officer

Reem Aly, Executive Director, Ohio School-Based Health Alliance

2022 Board of Directors

- Dan Paoletti (Board Chair), CliniSync/Ohio Health Information
- Isi Ikharebha Green (At-Large), Physicians CareConnection
- Tara Britton (Treasurer), The Center for Community Solutions
- Carrie Baker (President), Health Impact Ohio
- Erin Brigham, CareSource
- Charles Fisher, DO, Columbus Osteopathic Association
- Bob Falcone, MD, Columbus Medical Association
- Alex Kemper, MD, Nationwide Childrens Hospital
- Mary Sheehan, Battelle
- Ayaz Hyder, PhD, The Ohio State University
- Daniel Wendorff, MD, Mt. Carmel Health System
- Karen King, MD, Northwest Ob/Gyn
- Jeff Klingler, Central Ohio Hospital Council
- Kurt Lewis, United Healthcare
- Teresa Long, MD, Ohio State University College of Public Health
- Cindy McCarthy, Anthem
- Julie Erwin Rinaldi, Sinter
- Leonard Scott, Merck
- Bob Stone, Central Ohio Primary Care
- Charleta Tavares, PrimaryOne Health Center